

# **Opposite Behaviour of Food Market from that of Other Commodities: A Cause of High Inflation**

**Ashish Kumar and Dilip Kumar Sinha<sup>1</sup>**

## **Introduction**

This paper is in continuation of the paper 'National Price Indices and Inflation during 2012' authored by Ashish Kumar and G. M. Boopathy. The aforesaid paper has given detailed account of weighting diagram, base year, methods of index computation etc. This paper focuses on the analysis of the price movements depicted by different types of Consumer Price Indices and Wholesale Price Indices.

The Central Statistics Office (CSO), Ministry of Statistics and Programme Implementation, releases Consumer Price Indices (CPI) on base 2010 = 100 for All India and States/UTs separately for rural, urban and combined every month since January 2011 and annual inflation rates from January 2012 onwards.

Other Consumer Price Indices namely, CPI (Industrial Worker) on base 2001 = 100, and CPI (Agricultural Labourer) and CPI (Rural Labourer) on base 1986-87 = 100 are compiled by the Labour Bureau, Ministry of Labour and Employment. Wholesale Price Index (WPI) on base 2004-05, is released by the Ministry of Commerce and Industry

## **Trend of Overall Inflation Rates, Based on Different Price Indices**

All India overall monthly inflation rates (point to point basis), based on different types of indices are given in Table1 at Annexure. Average annual inflation rates based on these indices are given as follows:

---

<sup>1</sup>Ashish Kumar, Additional Director General (NAD), CSO; Dilip Kumar Sinha, Director(PCL), NAD, CSO

### All India inflation rates (point to point) during 2012 to 2014

Year	Average Annual Inflation Rate						
	CPI (R <sup>2</sup> )	CPI (U <sup>3</sup> )	CPI (C <sup>4</sup> )	CPI (IW <sup>5</sup> )	CPI (AL <sup>6</sup> )	CPI (RL <sup>7</sup> )	WPI
2012	9.44	10.05	9.69	9.30	8.37	8.64	7.55
2013	10.01	10.14	10.07	10.92	12.63	12.47	6.32
2014	8.89	7.72	8.38	6.89	8.53	8.66	5.30

Note: Figures for 2014 are average of January to March 2014.

Inflation, based on CPI (C), has been ranging from 7.65% to 11.16% during the period of January 2012 to March 2014. The price rise was minimum in January 2012 and maximum in November 2013. Looking at the annual average, we find that the inflation rate was 9.69% in 2012, which increased to the level of 10.07% in 2013.

Basket of items, used for compiling CPIs and WPI, contains those items also, which are seasonal in nature, i.e. prices of such items increases or decreases in certain months of every year. Therefore, the indices exhibit seasonal pattern. As far as point-to-point inflation rates are concerned, generally, it should not exhibit seasonal behaviour, since it is a ratio of the indices of same month in different years. Similarly, in case of non-seasonal items, if prices are either stable (more or less), barring a few fluctuations due to dynamics in markets, or rise/ fall with a stable rate, then the inflation rates should not exhibit increasing or decreasing trend. If the inflation rates show the presence of seasonal variation and/or trend, this leads to the interpretation that the prices of seasonal as well as non-seasonal items have behaved abnormally. Pattern of inflation rates based on different types of CPIs and WPI in 2012, 2013 and first quarter of 2014 are presented in Figure 1.

---

<sup>2</sup>Rural

<sup>3</sup>Urban

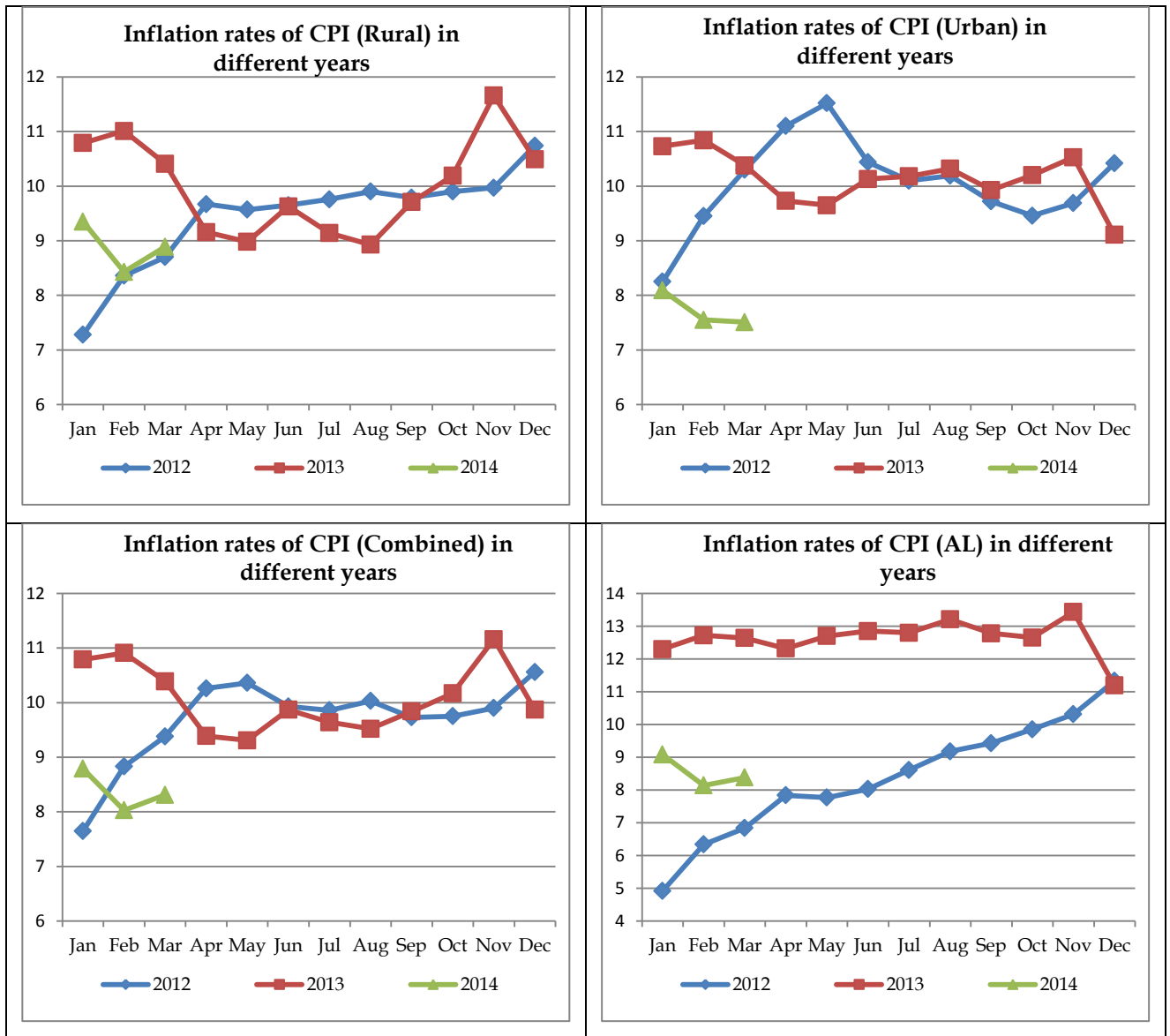
<sup>4</sup>Combined

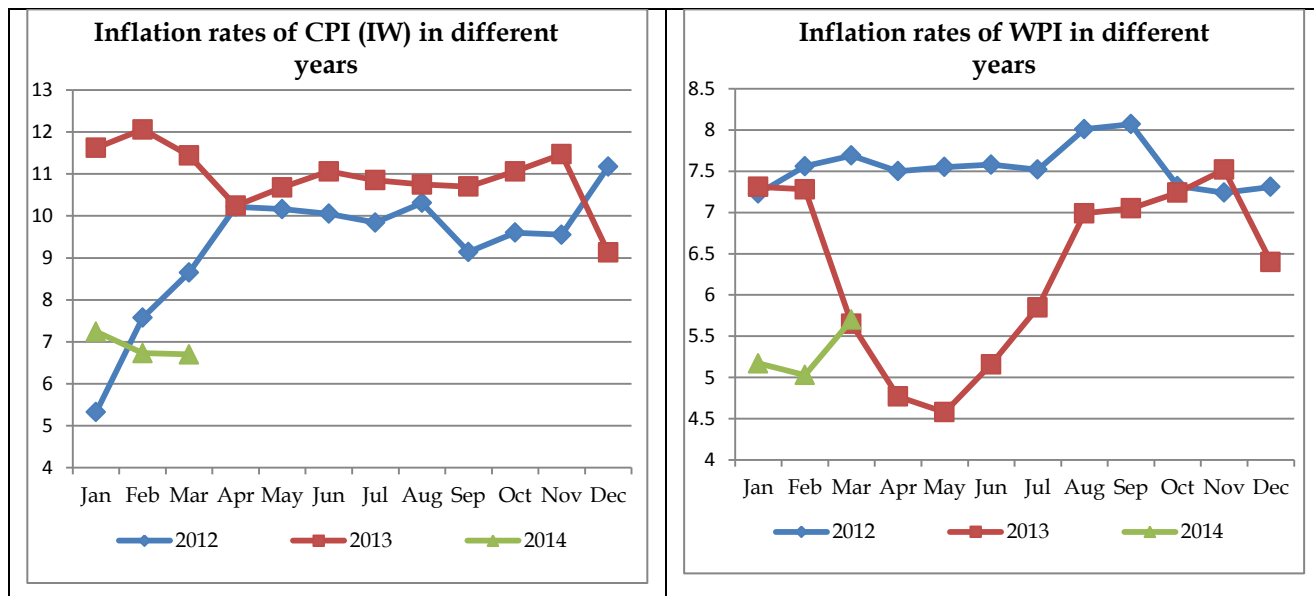
<sup>5</sup>Industrial Worker

<sup>6</sup>Agricultural Labourer

<sup>7</sup>Rural Labourer

Figure1





Inflation rates based on CPI (Rural) had shown an increasing trend in 2012. But in 2013, it depicted some seasonal behaviour as the rate was above 10% till March 2013, which declined close to 9% and remained below 10% till September 2013. The rate again went above 10% in October 2013 and continued for three months.

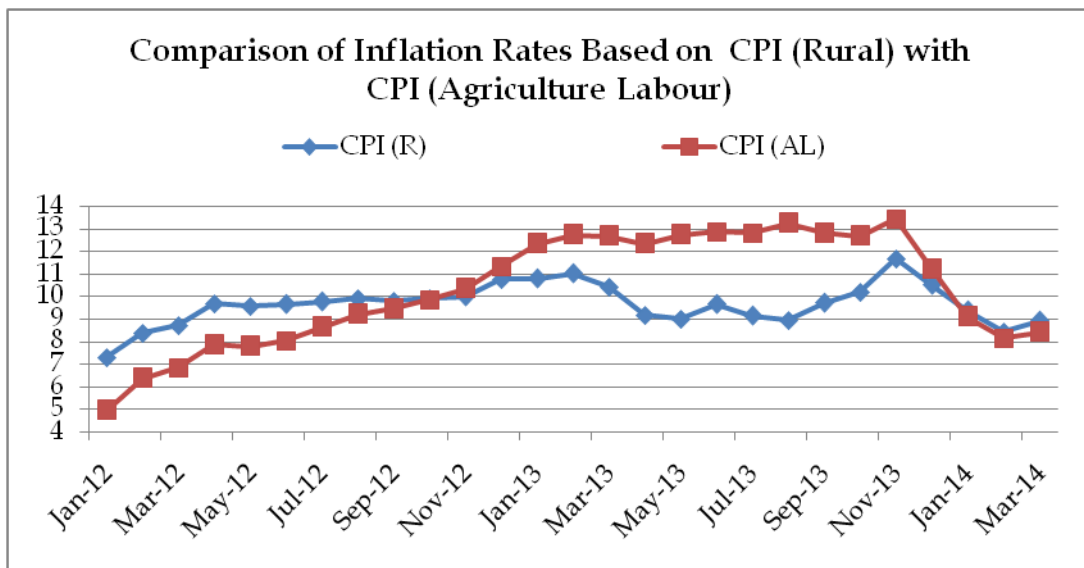
Pattern of price rise, in case of CPI (Urban), also displayed different patterns in different years, especially for a few months as in 2012, the rate was above 11% in April and May, whereas, it remained below 10% during the same months of 2013. A mixture of the behaviour of the price rise in CPI (R) and CPI (U) was reflected in the inflation rates based on CPI (Combined).

In case of CPI (AL), an increasing trend of price rise was registered in 2012, whereas, in 2013, stable inflation rate at a very high level of more than 12% was exhibited. Similar behaviour was also shown by the inflation rates based on CPI (IW) showing increasing trend in 2012 and in 2013, it remained hovering around 11%.

WPI had stable inflation rates, oscillating between 7% and 8% in 2012. Contrary to that in 2013, the price rise in wholesale market depicted a different pattern. The graph of the inflation rates based on WPI, in 2013, look like a bath-tub curve. The inflation rate registered steep decline every month from February 2013 and reached to the bottom of 4.58% in May 2013. Subsequently, it started increasing and reached close to 7% in August 2013. Thereafter, it remained hanging around 7.25%.

It is important to make a comparison of inflation rates based on different indices. It is appropriate to compare CPI (R) with CPI (AL) as both these indices reflect the dynamics of rural markets, whereas, CPI (U) can be compared with CPI (IW) because of prices collected for these indices are from urban markets. Similarly, WPI can be compared with CPI (C).

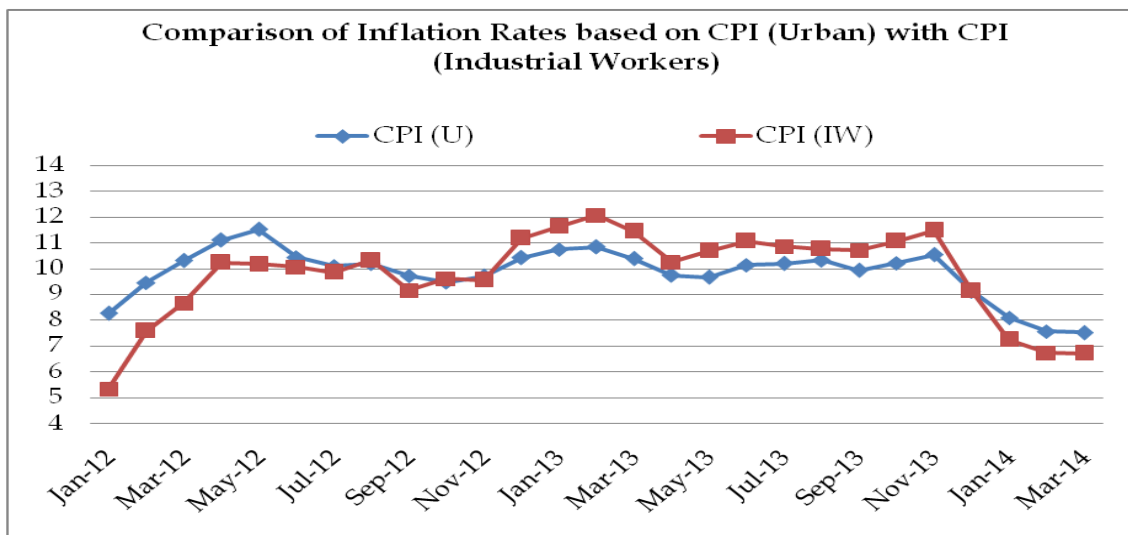
**Figure 2**



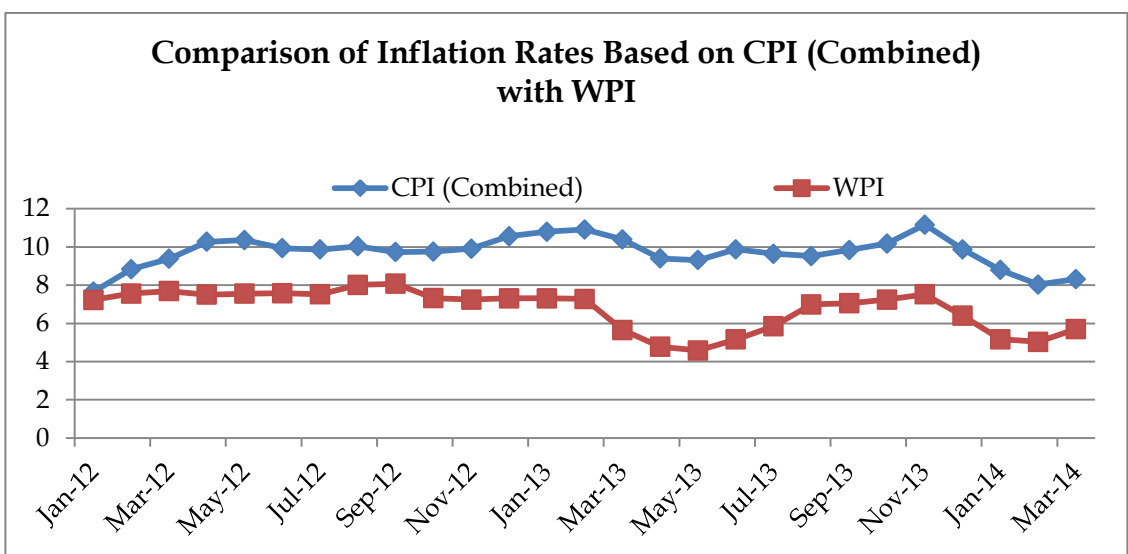
While comparing CPI (R) with CPI (AL) (Figure 2), we find that, initially, the inflation rate, in respect of CPI (R), was above the level of the rate of CPI (AL). But after the month of October 2012, CPI (AL) surpassed CPI (R) and continued to do so, till the month of December 2013, before converging in January, 2014 to March, 2014. Significant gap between the rates

based on these two indices was found during the period of January 2013 to November 2013, wherein, CPI (AL) was hovering around 12% to 13%, but CPI (R) was found to be downward with some oscillation. The inflation rates of CPI (R) ranged between 7.28% and 11.66% during the aforementioned period. Similar patterns were observed in case of CPI (U) and CPI (IW) (Figure 3).

**Figure 3**



**Figure 4**



Pattern of the movement of prices in the wholesale and retail markets have been similar during January 2012 to March 2014 as per the trends of inflation rates based on CPI (C) and WPI exhibited in Figure 4. The inflation rates based on WPI remained below the rate based on CPI (C). The gap between the rates based these two indices ranged from 0.42 percentage points to 4.74 percentage points during the aforementioned period. WPI registered average annual price rise at 7.55 percent and 6.32 percent during 2012 and 2013 respectively. Fall in the average annual inflation rate, based on WPI, from 2012 to 2013 is contrary to the behaviour shown by the CPIs, as average annual inflation rates, based all CPIs, increased from 2012 to 2013. Difference in the inflation rates based on WPI and CPI is attributed to difference in (a) coverage of items, (b) weighting diagrams and (c) sources of price collection i.e. retail markets in case of CPI whereas wholesale market in case of WPI.

### **Price Rise in respect of Different Categories of Items**

CPI (R), CPI (U) and CPI (C) have 56.59%, 35.81% and 47.57% weights in respect of 'Food and Beverages', respectively. In case of CPI (IW), CPI (AL) and CPI (RL) the share of 'Food and Beverages' are 46.20%, 69.15% and 66.77% respectively. On the other hand, the share of 'Food' in WPI basket is only 24.31%. Because of the significantly higher weight of 'Food and Beverages' in Consumer Price Indices, the overall retail inflation is mainly governed by the rate of price rise of items falling under this category. Inflation rates, in respect of different categories/groups of items are given in Table 2 at Annexure.

### **Food and Beverages**

Average annual inflation rates, based on CPI (C), for the years 2012 and 2013, were 10.15% and 12.14% respectively. Minimum price rise of 4.08%

was observed in January 2012 and the rate touched the peak of 14.65% in the month of November 2013. Looking at the pattern of inflation rate of this category and of all items, we find that these two rates have been moving together during the period of January 2012 to March 2014.

Within 'Food and Beverages', major contributors are 'Cereals and Products', 'Milk and Milk Products' and 'Vegetables', which put together have significant share of 58.36% in this category of items in CPI (C). Average annual inflation rates, in respect of these three sub-groups, during 2012, were 7.02%, 12.50% and 14.38%, respectively. In 2013, the rates were registered at 14.90%, 8.03% and 26.10%, respectively. Inflation rate, in respect of 'Vegetables', was high in 2012, which further increased significantly in 2013. Impact of these three sub-groups kept the inflation rate of 'Food and Beverages', at higher level which ultimately led to high overall inflation rate during 2012 as well as in 2013.

Inflation based on CPI (R), in respect of 'Food and Beverages', was above the rate of CPI (AL) until January 2013. Subsequently, the rate moderated but remained hovering around a high level of 11% for seven months and finally, the rates based on these two indices converged at a peak of around 14.7% in November 2013. Similar trends of CPI (U) and CPI (IW) were also observed for this category of items.

In case of WPI, wide fluctuations were observed in 'Food' items during January 2012 to March 2014, as the inflation rate moved from the minimum level of 1.44% in January 2012 to the maximum level of 13.63% in November 2013. Average annual inflation rate, based on WPI, also registered significant jump by 2.27 percentage points from 8.11% in 2012 to 10.38% in 2013 like other CPIs.



## **Fuel and Light**

Inflation rates based on CPI (AL) was higher than CPI (R) with an average gap of 3.62 percentage points during the period of January 2012 to March 2014. Similarly, CPI (IW) was higher than CPI (U) in most of the period. Until February 2013, inflation rate based on CPI (IW) was higher than that of CPI (U) by 4.58 percentage point (on an average). Subsequently, the rate based on both the indices moved concurrently.

## **Clothing Bedding and Footwear**

Inflation rates based on CPI (R) and CPI (AL) remained oscillating around same level except for first few months (January 2012 to June 2012), where the rate based on CPI (AL) was higher than that of CPI (R). Looking at the rate based on CPI (U) and CPI (IW), it is obvious that both the indices reflected continuous fall in prices and the inflation rate based on CPI (IW) remained lower than that of CPI (U).

## **Miscellaneous**

Miscellaneous Group consists of items falling under the categories of medicines, medical services, education services, stationery, recreation, transport and communication, personal care effects, household requisites and other services viz. hair cutting, tailoring etc. Price rise was registered at higher rate in CPI (AL) as compared to CPI (R) during January 2012 to March 2014, as the rate based on former was on an average 3.47 percentage point higher than that of latter. CPI (U) and CPI (IW) exhibited similar pattern, except for a period of September 2012 to August 2013, where the inflation rates based on CPI (IW) remained, on an average, higher than that of CPI (U) by 1.57 percentage points.

## **Housing**

Housing indices are compiled only in CPI (U) and CPI (IW). Former registered higher rent increase compared to later as average annual inflation rates, based on CPI (U), were 12.07% and 10.48% respectively in 2012 and 2013 whereas these rates for CPI (IW) were 7.85% and 6.82% respectively. Such gap may be attributed to coverage of different types of houses for compilation of these two indices. Dwellings for which rent is collected in case of CPI (U) covers all types whereas dwellings in CPI (IW) are for Industrial Workers and therefore such a difference reflects the difference in the coverage.

## **Comparison of 'Food and Beverages' with other Groups of Items**

Inflation rates, based on all CPIs, in respect of 'Food and Beverages', depicted increasing trends during January 2012 to March 2014, whereas, the rates, in respect of 'Fuel and Light', 'Clothing, Bedding and Footwear' and 'Miscellaneous' groups, reflected declining trend. These three groups put together contribute 40.69%, 40.31% and 40.53% weights in CPI (R), CPI (U) and CPI (C), respectively. Such shares in CPI (IW), CPI (AL) and CPI (RL) are 36.26%, 27.06% and 29.53% respectively. Higher rate of inflation in 'Food and Beverages' had higher impact.

## **State Inflations**

Inflation rates, based on CPI (combined), of 'Food, Beverages and Tobacco' and remaining items put together, in respect of major States having population more than 50 lakhs as per Population Census 2011 are given in Tables 3 and 4 respectively in the Annexure.

Average inflation rates, based on CPI (combined), of 'Food, beverages and Tobacco' in respect of major States ranged from 9.61 percent in Punjab to 15.15 percent in Kerala in 2013. Three States namely, Jammu and Kashmir, Assam and Punjab registered average inflation rate below 10 percent, whereas Kerala, Andhra Pradesh, Karnataka and Tamil Nadu had higher inflation rates of more than 13 percent in 2013. In first three months of 2014, inflation rates declined to 8 percent and below in Andhra Pradesh, Karnataka and Tamil Nadu but Kerala registered high rate of 11.56 percent. On the other hand, Jammu and Kashmir and Punjab remained at moderate inflation as compared to other States. In case of Assam, the rate increased to 12.05 percent during the same period.

In case of items other than 'Food, beverages and Tobacco', average inflation rates in respect of major States ranged from 5.92 percent in Uttarakhand to 10.00 percent in Bihar in 2013. Three States namely, Uttarakhand, Haryana and Gujarat registered average inflation rate below 7 percent, whereas Bihar and Jharkhand had high inflation rates of more than 9 percent in 2013. During first three months of 2014, Uttarakhand, Haryana and Gujarat remained at average inflation rates close to 7 percent.

### **Probable Measures to Control Inflation**

As per the data of NSS 61<sup>st</sup> Round of Consumer Expenditure Survey (2004-05), following items contribute about 20.57% to the total expenditure per household:

<b>Items</b>	<b>Share in total expenditure per household</b>
Rice	7.50
Wheat/wheat atta	4.27
Liquid Milk	7.13

Potato	1.08
Onion	0.59
<b>Total</b>	<b>20.57</b>

This shows that fall of 5% inflation of these items put together may result in decline of overall inflation by 1%.

Further, following eight States contribute about 64.29 percent of the total consumer expenditure at all India level:

<b>State</b>	<b>Share in all India total expenditure</b>
Uttar Pradesh	14.24
Maharashtra	11.77
West Bengal	8.21
Andhra Pradesh	7.32
Tamil Nadu	6.61
Gujarat	5.64
Rajasthan	5.52
Karnataka	4.98
<b>Total</b>	<b>64.29</b>

Therefore, fall of 5% inflation, based on CPI (Combined) of these States put together may result in decline of overall inflation by 3.21% in all India inflation.

## **Conclusion**

India has been experiencing high inflationary pressure for last two years mainly because of price rise in the food market. The prices of food commodities, which were rising moderately during initial few months of

2011, were continuously accelerating till November 2013. Though the other commodities exhibited declining rates of inflation, opposite trend of price rise, in respect of 'Food and Beverages', having significant weight, kept the overall inflation very high. Targeting few important items, namely Rice, wheat, liquid milk, potato and onion across the States may bring down the inflation rate to a moderate level. On the other hand, controlling overall inflation of a few States, namely, Uttar Pradesh, Maharashtra, West Bengal, Andhra Pradesh, Tamil Nadu, Gujarat, Rajasthan, and Karnataka would have significant positive impact on overall inflation at all India level.

Annexure

Table 1: All India inflation rates (point to point) during Jan 12 to March 14

Month	CPI (R)	CPI (U)	CPI (C)	CPI(A L)	CPI(R L)	CPI(I W)	WPI
Jan-12	7.28	8.25	7.65	4.92	5.27	5.32	7.23
Feb-12	8.36	9.45	8.83	6.34	6.68	7.57	7.56
Mar-12	8.70	10.3	9.38	6.84	7.19	8.65	7.69
Apr-12	9.67	11.1	10.26	7.84	8.01	10.22	7.50
May-12	9.57	11.52	10.36	7.77	8.11	10.16	7.55
Jun-12	9.65	10.44	9.93	8.03	8.54	10.05	7.58
Jul-12	9.76	10.1	9.86	8.61	8.94	9.84	7.52
Aug-12	9.90	10.19	10.03	9.18	9.34	10.31	8.01
Sep-12	9.79	9.72	9.73	9.43	9.93	9.14	8.07
Oct-12	9.90	9.46	9.75	9.85	9.84	9.60	7.32
Nov-12	9.97	9.69	9.90	10.31	10.47	9.55	7.24
Dec-12	10.74	10.42	10.56	11.33	11.31	11.17	7.31
Jan-13	10.79	10.73	10.79	12.3	12.28	11.62	7.31
Feb-13	11.01	10.84	10.91	12.72	12.52	12.06	7.28
Mar-13	10.41	10.38	10.39	12.64	12.62	11.44	5.65
Apr-13	9.16	9.73	9.39	12.32	12.15	10.24	4.77
May-13	8.98	9.65	9.31	12.7	12.5	10.68	4.58
Jun-13	9.63	10.13	9.87	12.85	12.65	11.06	5.16
Jul-13	9.14	10.18	9.64	12.8	12.61	10.85	5.85
Aug-13	8.93	10.32	9.52	13.21	12.89	10.75	6.99
Sep-13	9.71	9.93	9.84	12.78	12.44	10.7	7.05
Oct-13	10.19	10.2	10.17	12.65	12.48	11.06	7.24
Nov-13	11.66	10.53	11.16	13.43	13.27	11.47	7.52
Dec-13	10.49	9.11	9.87	11.19	11.18	9.13	6.40
Jan-14	9.35	8.09	8.79	9.08	9.21	7.24	5.17
Feb-14	8.43	7.55	8.03	8.14	8.27	6.73	5.03
Mar-14	8.89	7.51	8.31	8.38	8.51	6.70	5.70

**Table 2: All India Inflation Rates of Different Categories of Items**

Month	CPI(R)	CPI (U)	CPI (C)	CPI(AL)	CPI(RL)	CPI(IW)	WPI
<b>Food and beverages</b>							
Jan-12	4.16	4.01	4.08	0.33	0.50	0.49	1.44
Feb-12	6.30	7.14	6.61	2.55	2.72	5.08	5.95
Mar-12	7.63	9.15	8.03	3.94	4.10	8.16	8.72
Apr-12	9.77	10.69	10.18	5.3	5.64	10.66	9.35
May-12	10.16	11.29	10.66	5.61	5.94	10.61	8.90
Jun-12	10.31	11.52	10.71	6.24	6.40	10.45	9.11
Jul-12	11.33	12.15	11.53	7.35	7.50	11.27	9.01
Aug-12	11.81	12.67	12.03	8.28	8.43	12.20	9.37
Sep-12	11.67	11.61	11.71	9.05	9.20	11.00	8.85
Oct-12	11.85	10.70	11.35	8.97	9.28	9.91	7.79
Nov-12	12.04	11.43	11.89	9.80	9.95	10.85	8.97
Dec-12	13.09	12.94	13.04	11.59	11.90	13.53	9.91
Jan-13	13.13	13.81	13.36	12.98	12.94	14.08	11.05
Feb-13	13.53	13.87	13.64	13.58	13.55	14.98	10.83
Mar-13	12.51	12.23	12.51	13.51	13.46	13.21	8.19
Apr-13	10.62	10.94	10.69	12.82	12.78	12.39	6.51
May-13	10.41	11.41	10.65	13.37	13.14	13.24	7.69
Jun-13	11.44	12.75	11.84	13.97	13.92	14.86	8.98
Jul-13	10.50	12.30	11.16	13.84	13.80	14.10	9.57
Aug-13	10.40	12.37	11.06	14.22	14.02	13.91	13.24
Sep-13	11.48	11.36	11.44	13.27	13.08	13.36	12.66
Oct-13	12.40	12.86	12.64	13.62	13.11	15.02	12.69
Nov-13	14.82	14.55	14.65	14.73	14.54	16.17	13.63
Dec-13	12.60	11.06	12.09	11.57	11.23	11.49	9.54
Jan-14	10.59	8.20	9.82	8.54	8.52	8.94	6.15
Feb-14	9.27	7.10	8.57	6.85	6.99	7.56	5.53
Mar-14	9.95	7.47	9.10	7.55	7.53	7.50	7.11
<b>Fuel and light</b>							
Jan-12	13.60	12.43	13.13	16.72	16.92	17.37	
Feb-12	13.05	12.19	12.78	16.01	16.23	17.16	
Mar-12	11.67	11.92	11.80	13.90	14.10	18.93	
Apr-12	10.32	12.63	11.21	14.33	14.35	20.47	
May-12	9.28	13.06	10.74	13.17	13.36	18.39	
Jun-12	9.08	12.55	10.34	12.87	12.73	18.08	
Jul-12	6.83	7.98	7.27	12.08	11.94	12.37	
Aug-12	7.35	8.09	7.55	11.18	11.04	11.70	
Sep-12	7.12	7.27	7.21	9.94	9.81	12.11	
Oct-12	7.23	8.11	7.58	11.21	10.93	12.50	

Month	CPI(R)	CPI (U)	CPI (C)	CPI(AL)	CPI(RL)	CPI(IW)	WPI
Nov-12	6.43	9.08	7.44	10.3	10.01	13.02	
Dec-12	7.65	9.14	8.23	10.33	9.90	12.89	
Jan-13	7.84	9.52	8.43	10.92	10.64	11.73	
Feb-13	8.16	9.68	8.67	11.13	11.00	11.11	
Mar-13	7.65	9.55	8.31	11.50	11.38	9.45	
Apr-13	7.71	8.87	8.10	11.42	11.3	7.77	
May-13	8.33	9.06	8.55	11.36	11.10	8.25	
Jun-13	8.33	9.00	8.56	10.58	10.61	7.18	
Jul-13	7.99	9.03	8.39	10.64	10.53	8.13	
Aug-13	6.69	8.79	7.50	12.36	12.26	7.62	
Sep-13	7.43	8.23	7.67	12.96	12.86	7.98	
Oct-13	6.89	7.26	6.97	11.94	12.25	7.87	
Nov-13	7.74	5.89	7.00	11.84	12.01	6.91	
Dec-13	7.72	5.95	6.98	11.31	11.49	6.85	
Jan-14	7.04	5.67	6.54	10.87	10.9	7.76	
Feb-14	6.48	5.42	6.13	10.27	10.29	6.82	
Mar-14	7.03	4.94	6.29	9.18	9.21	7.27	
<b>Clothing, Bedding and footwear</b>							
Jan-12	13.78	15.39	14.25	18.22	16.38	13.48	
Feb-12	12.68	14.01	13.22	16.92	15.99	13.38	
Mar-12	11.99	12.97	12.41	15.49	15.02	12.50	
Apr-12	11.45	12.33	11.78	14.44	14.23	11.64	
May-12	11.01	11.94	11.36	12.28	12.87	10.74	
Jun-12	10.79	11.56	11.04	11.36	12.15	10.00	
Jul-12	10.59	11.44	10.93	10.69	11.45	9.87	
Aug-12	10.37	11.14	10.62	10.56	10.79	9.15	
Sep-12	9.96	10.94	10.32	10.83	11.22	9.03	
Oct-12	10.30	10.72	10.38	10.74	10.60	8.28	
Nov-12	11.38	10.60	11.08	10.96	10.66	8.23	
Dec-12	11.03	10.34	10.74	10.86	10.39	8.81	
Jan-13	11.21	10.35	10.92	11.8	11.33	8.75	
Feb-13	11.26	10.28	10.87	11.38	10.9	8.70	
Mar-13	11.03	9.97	10.64	11.31	10.83	8.64	
Apr-13	10.51	9.79	10.30	11.02	10.57	8.59	
May-13	9.76	9.65	9.72	10.94	10.63	7.88	
Jun-13	9.58	9.58	9.55	10.68	10.37	8.48	
Jul-13	9.42	9.18	9.31	10.59	10.12	7.19	
Aug-13	8.93	8.95	8.91	10.79	10.35	7.78	
Sep-13	9.36	9.03	9.28	11.15	10.99	7.10	
Oct-13	9.19	8.86	9.10	11.21	11.38	6.47	
Nov-13	9.10	8.62	8.94	10.93	10.96	6.43	



Month	CPI(R)	CPI (U)	CPI (C)	CPI(AL)	CPI(RL)	CPI(IW)	WPI
Dec-13	9.56	8.56	9.18	10.53	11.18	5.78	
Jan-14	9.57	8.28	9.11	10.12	10.76	5.75	
Feb-14	9.60	8.08	9.07	10.66	11.13	5.71	
Mar-14	9.50	8.12	8.96	10.74	11.21	5.68	
<b>Miscellaneous</b>							
Jan-12	9.81	7.97	8.93	12.29	12.36	6.88	
Feb-12	9.26	7.63	8.49	12.78	12.45	6.83	
Mar-12	8.93	7.60	8.37	12.31	12.17	7.45	
Apr-12	8.58	7.76	8.22	11.83	11.69	7.41	
May-12	8.29	7.89	8.13	11.74	11.99	7.36	
Jun-12	8.22	8.21	8.16	11.05	11.29	7.27	
Jul-12	7.50	7.57	7.53	10.36	10.41	7.23	
Aug-12	6.60	7.12	6.80	10.44	10.5	7.78	
Sep-12	6.70	6.98	6.83	10.70	10.76	7.69	
Oct-12	6.94	6.93	6.97	11.15	11.21	7.65	
Nov-12	6.63	6.98	6.74	11.25	11.30	8.82	
Dec-12	6.62	7.14	6.82	10.19	10.05	9.36	
Jan-13	6.68	7.20	6.88	10.10	9.98	9.94	
Feb-13	6.83	7.62	7.21	10.00	10.07	9.88	
Mar-13	6.73	8.05	7.37	10.47	10.35	9.83	
Apr-13	6.36	7.64	6.98	10.74	10.63	9.77	
May-13	5.87	6.52	6.14	10.84	10.38	8.57	
Jun-13	5.91	6.36	6.17	10.44	9.98	7.91	
Jul-13	6.31	7.21	6.75	10.52	10.24	7.87	
Aug-13	6.69	7.60	7.13	10.42	9.98	7.78	
Sep-13	6.78	8.15	7.40	10.30	10.03	7.69	
Oct-13	6.57	7.42	6.93	9.72	9.76	7.10	
Nov-13	6.87	6.95	6.90	9.95	9.84	6.49	
Dec-13	7.27	6.84	7.05	9.71	9.75	5.88	
Jan-14	7.24	6.88	7.10	9.63	9.85	5.85	
Feb-14	7.04	6.58	6.81	9.70	9.91	5.82	
Mar-14	7.28	6.29	6.78	9.47	9.83	5.79	
<b>Housing</b>							
Jan-12		12.67				8.96	
Feb-12		13.37				8.96	
Mar-12		14.06				8.96	
Apr-12		14.84				8.96	
May-12		15.74				8.96	
Jun-12		10.64				8.96	
Jul-12		10.65				6.73	
Aug-12		10.75				6.73	

Month	CPI(R)	CPI (U)	CPI (C)	CPI(AL)	CPI(RL)	CPI(IW)	WPI
Sep-12		10.85				6.73	
Oct-12		10.55				6.73	
Nov-12		10.37				6.73	
Dec-12		10.34				6.73	
Jan-13		10.27				6.49	
Feb-13		10.48				6.49	
Mar-13		10.49				6.49	
Apr-13		10.58				6.49	
May-13		10.67				6.49	
Jun-13		10.72				6.49	
Jul-13		10.56				7.14	
Aug-13		10.54				7.14	
Sep-13		10.45				7.14	
Oct-13		10.44				7.14	
Nov-13		10.29				7.14	
Dec-13		10.26				7.14	
Jan-14		10.2				5.69	
Feb-14		9.88				5.69	
Mar-14		9.89				5.69	

**Table 3.CPI (Combined) State Inflation Rates, of 'Food, beverages and Tobacco'**

Major States	Jan-13	Feb-13	Mar-13	Apr-13	May-13	Jun-13	Jul-13	Aug-13	Sep-13	Oct-13	Nov-13	Dec-13	Jan-14	Feb-14	Mar-14
Jammu & Kashmir	10.63	10.88	9.60	8.24	8.62	9.34	8.24	8.64	10.30	10.39	12.43	10.23	8.34	7.28	8.13
Himachal Pradesh	12.79	13.57	12.72	10.60	8.66	9.5	9.07	9.43	11.07	11.84	15.23	12.29	10.46	8.61	9.54
Punjab	11.69	11.24	10.2	8.59	8.12	8.42	8.03	7.92	9.49	10.57	12.51	8.57	7.33	7.38	7.74
Uttarakhand	13.5	13.58	12.22	9.48	7.91	8.84	9.34	8.93	9.52	10.07	12.72	9.99	7.77	7.76	8.52
Haryana	12.08	11.04	10.4	8.96	8.07	8.83	9.16	9.70	11.37	13.54	14.75	10.76	9.10	8.75	9.11
Delhi	10.96	11.11	10.27	8.85	8.25	8.78	10.44	12.42	11.18	13.19	17.72	13.21	9.48	10.79	8.38
Rajasthan	13.49	13.29	11.60	9.75	10.22	11.04	9.30	8.65	8.94	9.70	11.73	9.58	8.13	7.38	8.15
Uttar Pradesh	15.10	14.87	13.27	11.24	10.47	10.46	10.07	8.69	9.31	10.41	14.66	12.98	10.45	9.52	10.71
Bihar	14.49	15.48	13.93	9.99	8.73	9.25	9.00	9.93	11.08	12.6	17.03	14.51	11.95	10.19	11.76
Assam	10.79	10.03	10.08	6.70	5.67	7.70	6.74	8.98	11.03	11.74	14.35	12.79	12.11	12.2	11.84
West Bengal	14.64	13.94	12.63	10.07	9.42	9.57	9.27	10.00	11.11	13.34	17.31	14.74	14.09	11.54	12.76
Jharkhand	14.25	13.95	12.48	11.16	10.18	9.82	9.94	10.7	10.69	12.23	16.13	13.09	10.37	8.29	9.23
Odisha	12.04	11.60	9.58	7.86	8.43	8.46	8.27	7.70	9.79	12.69	18.31	14.3	12.28	8.62	9.07
Chattisgarh	11.05	11.96	11.64	10.43	8.52	11.01	10.45	10.91	13.97	16.98	19.71	17.57	15.30	14.03	13.26
Madhya	12.42	13.08	12.26	11.20	11.69	12.2	11.35	10.10	11.01	12.95	13.35	11.31	9.87	8.70	8.83

Major States	Jan-13	Feb-13	Mar-13	Apr-13	May-13	Jun-13	Jul-13	Aug-13	Sep-13	Oct-13	Nov-13	Dec-13	Jan-14	Feb-14	Mar-14
Pradesh															
Gujrat	11.68	11.51	10.66	9.34	9.30	11.12	11.16	11.32	10.6	13.06	13.41	10.63	8.54	7.65	7.06
Maharashtra	11.87	12.47	11.28	9.31	9.62	12.21	11.41	11.92	11.11	11.52	12.1	9.73	7.23	6.40	6.94
Andhra Pradesh	14.36	15.32	14.50	13.32	14.32	16.17	14.27	15.33	15.25	14.22	14.38	11.82	9.32	7.34	7.82
Karnataka	13.05	14.67	14.26	14.21	15.3	16.27	15.00	14.21	13.51	13.21	12.72	10.66	8.18	5.98	5.79
Kerala	12.88	13.19	13.27	12.85	13.81	17.13	17.14	16.42	17.41	16.8	16.71	14.2	11.64	11.12	11.94
Tamil Nadu	13.92	15.28	14.35	14.06	15.83	17.12	14.22	13.5	12.58	12.63	12.01	9.53	6.53	5.24	5.15

**Table 4.CPI (Combined) State Inflation Rates, of other than 'Food, beverages and Tobacco'**

Major States	Jan-13	Feb-13	Mar-13	Apr-13	May-13	Jun-13	Jul-13	Aug-13	Sep-13	Oct-13	Nov-13	Dec-13	Jan-14	Feb-14	Mar-14
Jammu & Kashmir	6.87	6.20	6.22	7.07	7.14	8.04	8.82	8.73	10.23	9.97	8.92	8.74	8.34	7.74	7.15
Himachal Pradesh	7.93	7.60	7.94	7.48	6.54	6.71	7.04	8.08	8.46	7.98	8.90	8.45	8.42	9.17	8.91
Punjab	8.05	8.34	8.57	8.45	8.28	8.36	8.78	7.98	8.33	7.52	7.00	7.02	7.12	6.72	6.75
Uttarakhand	5.66	6.15	5.93	5.62	5.30	5.23	5.24	5.68	5.38	5.16	7.71	7.98	7.35	6.64	7.23
Haryana	5.66	5.80	5.72	6.12	6.34	6.20	6.82	6.82	7.68	6.97	6.52	6.83	6.47	6.23	6.49
Delhi	7.89	8.23	8.97	8.82	8.27	8.34	8.42	9.62	10.38	10.04	8.82	8.83	9.22	9.08	8.18
Rajasthan	7.75	8.17	7.76	7.55	7.25	7.51	7.81	7.54	7.55	6.87	7.14	7.84	7.65	7.29	7.68
Uttar Pradesh	8.52	8.68	8.77	8.53	8.49	8.34	8.13	7.93	8.01	7.54	7.70	7.63	7.58	7.20	7.05
Bihar	7.62	8.74	9.34	8.94	9.56	10.87	11.22	10.84	11.10	10.29	10.61	10.89	10.21	9.42	9.15
Assam	6.57	7.41	8.11	8.41	7.93	8.39	9.28	9.18	8.98	8.31	8.70	9.55	9.36	7.52	7.49
West Bengal	9.18	9.06	8.56	8.78	7.63	7.61	7.88	7.38	7.99	8.42	8.27	7.95	7.52	7.14	7.17
Jharkhand	9.59	9.66	9.79	9.92	9.81	9.42	10.06	9.18	10.06	9.38	8.58	8.83	8.41	8.00	7.91
Odisha	8.98	9.77	9.31	9.62	8.19	8.44	7.90	8.03	8.22	7.65	8.27	8.77	8.34	7.26	7.17
Chattisgarh	8.34	8.97	8.06	8.66	8.12	9.26	8.71	7.75	7.98	9.00	7.74	9.10	9.57	8.81	9.37
Madhya Pradesh	8.19	8.22	8.09	7.87	7.73	7.84	7.98	8.18	8.54	8.31	8.13	7.97	7.83	7.62	7.51
Gujrat	6.20	6.30	6.66	6.11	6.16	6.22	6.95	7.03	7.62	7.54	7.44	7.52	7.67	7.48	7.17
Maharashtra	8.91	9.27	9.02	8.81	8.29	8.07	8.12	8.13	7.58	7.13	6.94	6.64	6.59	6.72	7.05
Andhra Pradesh	8.44	8.52	8.67	8.20	7.69	7.25	7.43	7.44	7.37	6.76	7.05	7.13	7.53	7.60	7.81
Karnataka	8.04	8.38	8.43	7.89	7.79	8.14	9.07	9.56	10.21	9.42	9.88	10.57	10.47	9.79	9.77
Kerala	8.23	8.02	7.79	7.17	6.76	6.72	7.11	7.43	7.30	7.37	6.99	6.39	6.26	6.46	6.52
Tamil Nadu	10.35	10.21	10.20	8.99	8.33	7.93	7.93	7.97	8.09	7.84	7.79	7.92	7.51	7.40	7.46